

Thread Collector by Jeannette Douglas Designs



Thread Collector by Jeannette Douglas Designs

For The Caron Collection a Thread Collector box for your specialty threads.

Fabric: 32ct Vintage Basket weave by Lakeside Linens.

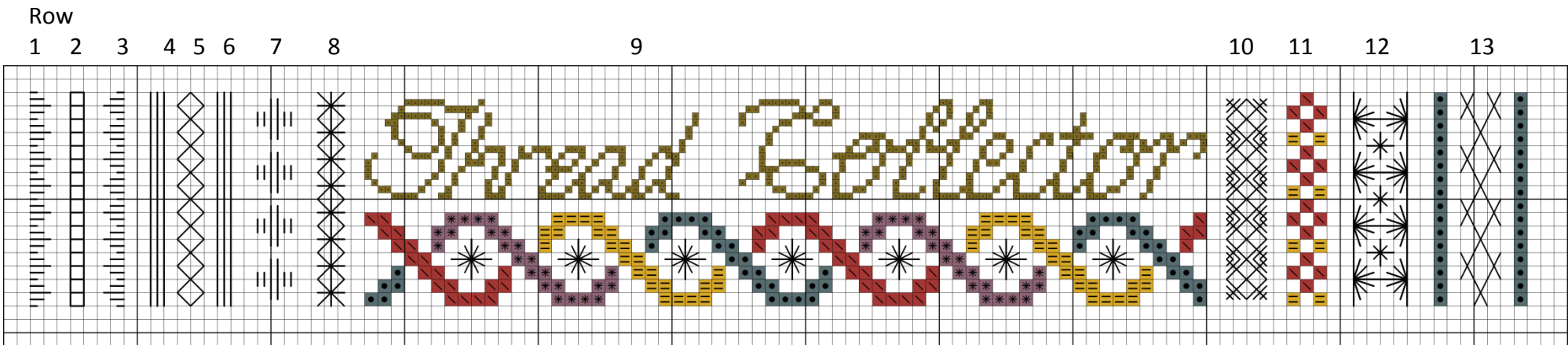
Design Count: 21 X 117

Design Size: 1 x 7

Placed in a pencil box by Olde Colonial Designs – Embossed #407

Colour Key –The Caron Collection Threads

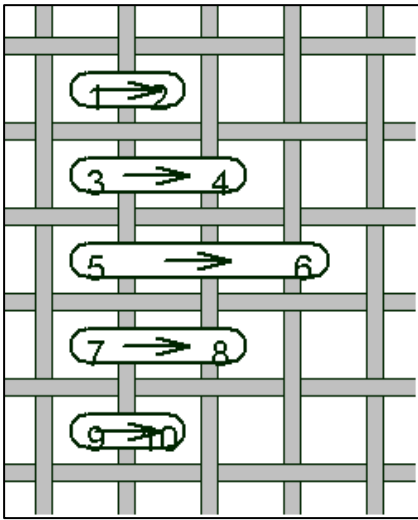
+	Water Lilies 137 Copper
●	Soie Cristale 5133 Teal
\	Soie Cristale 3061 Rust
*	Soie Cristale 1192 Mauve
=	Needlepoint Inc 694 Gold



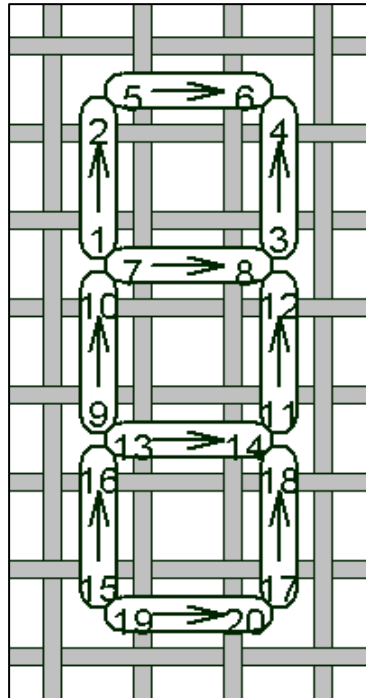
General Instructions: All stitching is done in 1 strand of silk. The stitch diagrams are over 1 fabric thread, and the main graph is over 2 fabric threads.

Row Instructions:

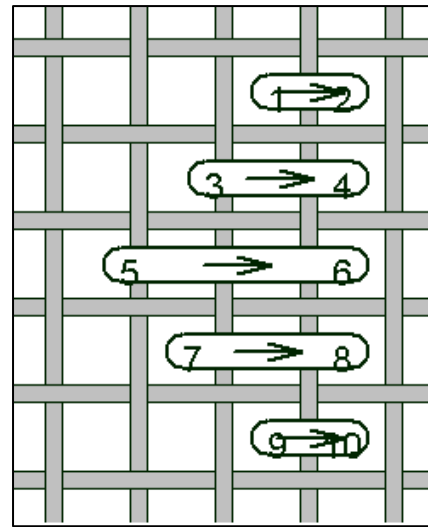
- 1) Satin stitch with WL 137 copper.
- 2) Foursided stitch with SC 5133 Teal
- 3) Satin stitch with WL 137 copper.
- 4) Backstitch with SC 1192 Mauve
- 5) Diamond backstitch with NPI Gold
- 6) Backstitch with SC 1192 Mauve
- 7) Hungarian stitch in SC 3061 Rust
- 8) Smryna stitch in WL 137 Copper.
- 9) Cross stitch over 1 fabric thread the words 'Thread Collector'. Cross stitch bottom row below words as designated and then place a star eyelet in the center with WL 137 Copper as shown in stitch diagram.
- 10) Rice stitch with WL 137 Copper.
- 11) Cross stitch as designated.
- 12) Triangle eyelet stitch in SC 1192 and add small upright cross stitches in NPI Gold
- 13) Cross stitch as shown and in the middle add oblong stitches in WL 137 Copper.



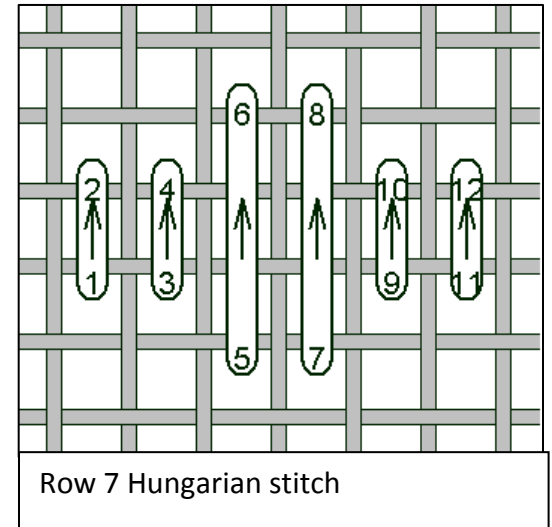
Row 1 Satin stitch



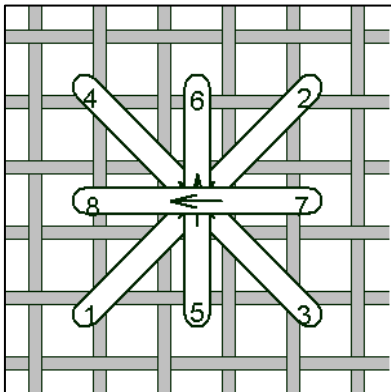
Row 2 Foursided stitch



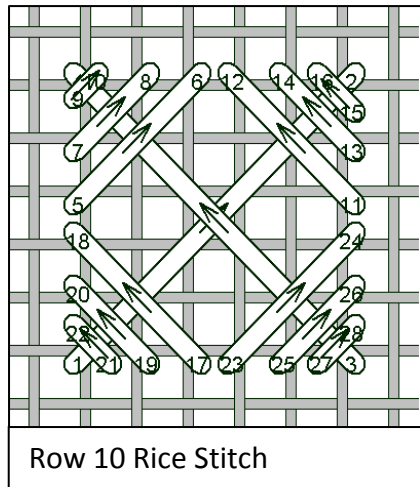
Row 3 Satin stitch



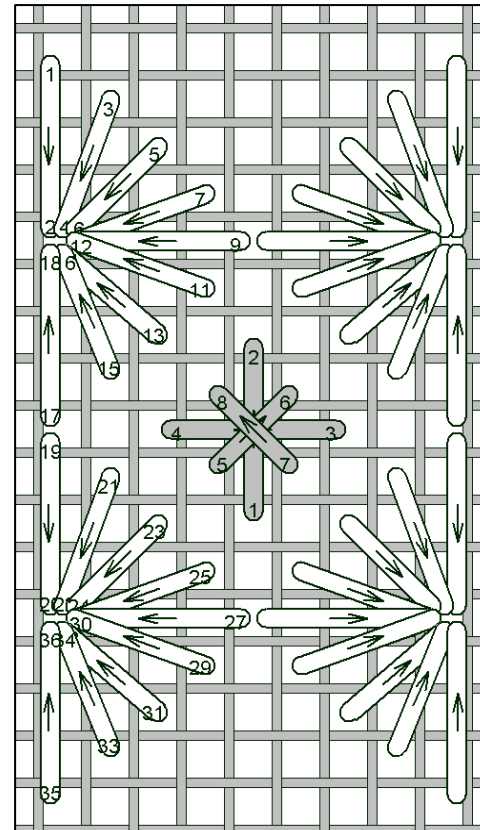
Row 7 Hungarian stitch



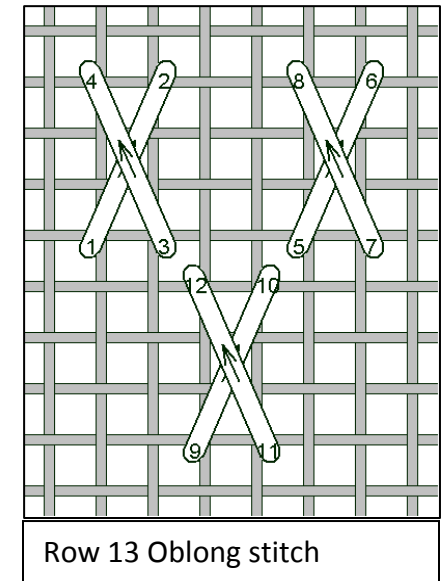
Row 8 Smryna stitch



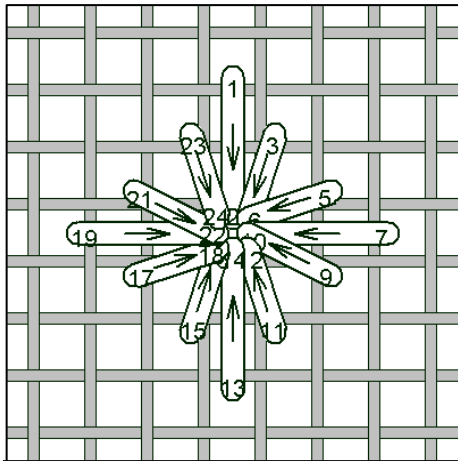
Row 10 Rice Stitch



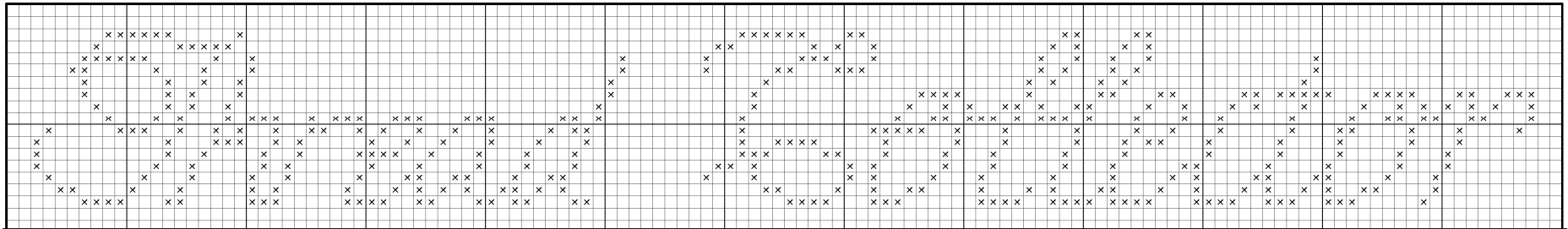
Row 12 Triangle eyelets and star stitch



Row 13 Oblong stitch



Row 9 Eyelets in center of cross stitched areas below words



Row 9 Words Cross stitched over 1 fabric thread.